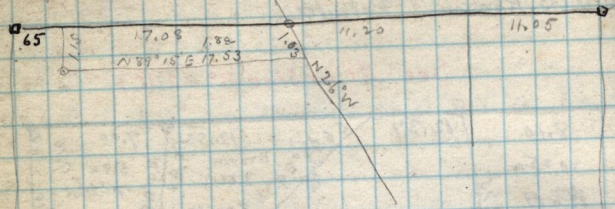


A 46

✓

N. E. 1/4 Sec. 17 T 6 N R. 1. W.

R. Christopherson (patentee)



✓ Copy, deed from John D. Pritchett to Wm F. Ransom
 March 2-1881 - Part of N. E. 1/4 Sec 1 T 6 N R 2. W, Beg.
 N. W. cor said 1/4 Sec. E. 6.75 ch, S 19° 8' 45" ch, along to
 S 81° 2' W 7.00 ch, S 1° W 3.82 ch. W 132 ch N 9.10 to
 4.13 with the same piece described on previous page
 of R. Ransom to W. D. Pritchett.